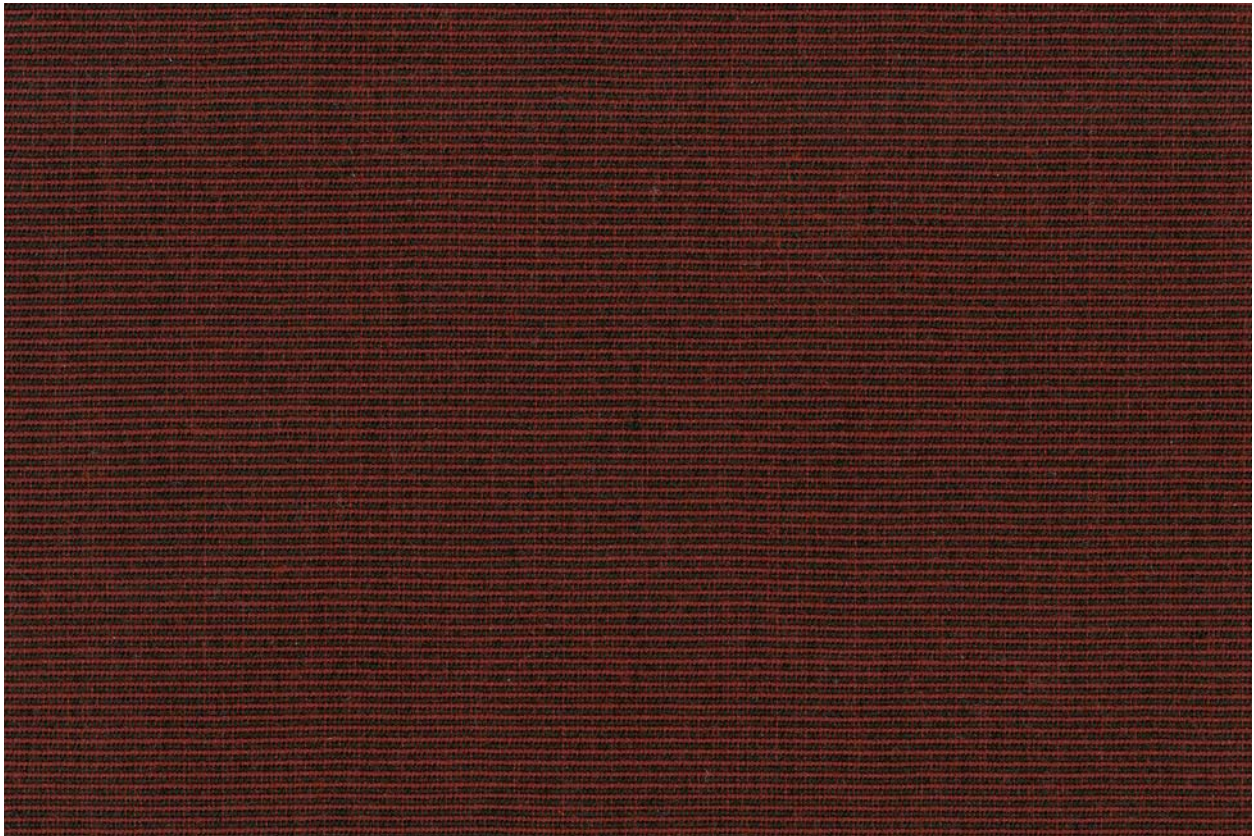
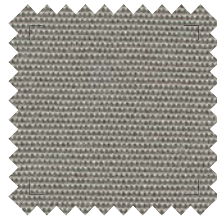


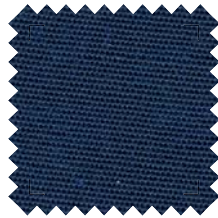
Recwater



RW-117 Raw
Back: Tan



RW-161 Grey
Back: Grey



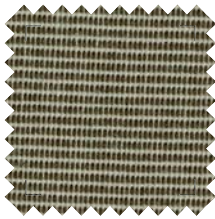
RW-199 Atlantic Blue
Back: Black



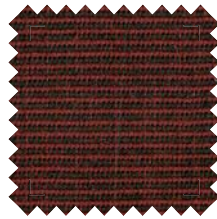
RW-175 Captain Navy
Back: Navy



RW-772 Blue Tweed
Back: Blue



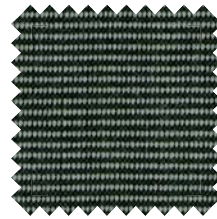
RW-775 Linen Tweed
Back: Linen



RW-773 Red Tweed
Back: Red



RW-771 Green Tweed
Back: Green



RW-770 Charcoal Tweed
Back: Charcoal



RW-103 Black
Back: Black



Recwater



The RECwater canvases are made of solution-dyed acrylic fibers with PVC coating on one side, which makes it absolutely waterproof. The PVC coating is colored to match with the acrylic, thus, it is possible to combine the elegance of the acrylic fabric with PVC waterproof performance.

The PVC coating is formulated to achieve perfect adhesion with the acrylic fabric. Unlike other products on the market, RECwater does not crack or peel and has excellent dimensional stability.

The PVC-free face is treated to achieve good water and oil repellency, while the coated side is engraved with a design that gives the PVC a fabric appearance.

Being a heavier and waterproof fabric makes RECwater suitable for boats in more extreme weather conditions.

It is also suitable for awnings in rainy climates. When using RECwater, the weight of the fabric should be taken into consideration when choosing hardware.

RECWATER TECHNICAL FEATURES

| | |
|------------------------|-----------------------------------|
| Base Cloth Composition | 100% Solution Dyed Acrylic |
| Width | 60" / 152 cm ±1 % |
| Weight | 19 oz ±5 % |
| Finish | Embossed PVC coating on one side. |
| Water Column | 100 % water-proof |
| Oil Repellency | >3 |
| Water Repellency | >3 |
| Tensile Strength Warp | 180 daN /5 cm ±5 % |
| Tensile Strength Weft | 80 daN /5 cm ±5 % |
| Tear Strength Warp | 4 daN ±10 % |
| Tear Strength Weft | 2 daN ±10 % |
| Standard Peel Length | 65.6 yds / 60 m |

RECwater is backed with a **5 Year Warranty**. For details, visit <http://recasensusa.com/producto/recwater/>

RECASENS USA

BCN ■ 1886