

Width: 60"

● PREMIUM COLORS



R-099 WHITE



R-117 RAW



R-126 LINEN



R-100 BEIGE



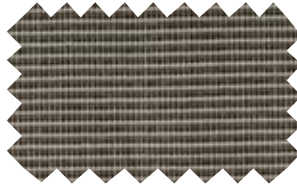
R-178 TOAST **NEW**



R-139 HEATHER BEIGE



R-143 HEMP BEIGE



R-775 LINEN TWEED



● R-554 YELLOW



● R-567 ORANGE



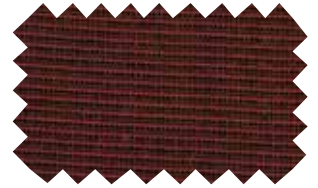
● R-176 RED



● R-182 VERMILLION



● R-177 BURGUNDY



● R-773 RED TWEED



R-104 CHESTNUT



R-156 BROWN



R-015 ROOKWOOD RED



R-165 MAUVE



R-172 BLUE



R-772 BLUE TWEED



R-170 ADMIRAL BLUE



R-174 NAVY BLUE



R-175 CAPTAIN NAVY



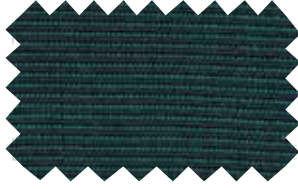
R-142 EMERALD



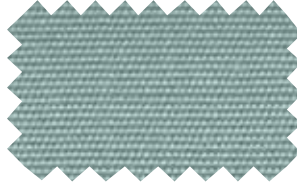
R-163 GREEN



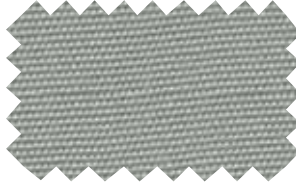
R-102 FOREST GREEN



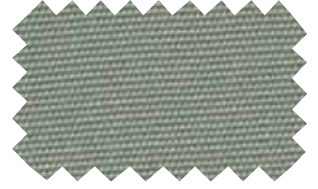
R-771 GREEN TWEED



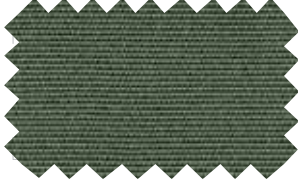
R-123 ARGENTA GREY



R-138 CADET GREY



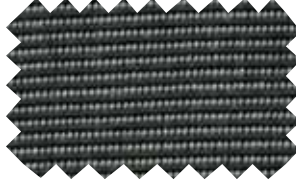
R-161 GREY



R-127 MOONROCK



R-164 CHARCOAL GREY



R-770 CHARCOAL TWEED



R-103 BLACK



2016 Solids Collection

Warranty

Because S.A. Recasens' fabrics are manufactured with only the highest-quality raw materials and the most rigorous quality-assurance procedures, we offer a 10 year warranty on Recacril.

The warranty protects against the loss of characteristics, rot, mildew and discoloration typical in normal atmospheric conditions. This warranty does not apply against deterioration of any kind due to abusive use, accidental burns, negligence, vandalism, perforations, natural disasters or acts of nature. Normal wear, weather soiling, or stains from environmental pollution or other sources are not covered.

The product must be properly installed and maintained. The warranty, if applicable, does not cover labor, frames, systems and installation supplied by the dealer.

Please refer to www.recasensusa.com/commitment to read a complete copy of the warranty.

Care and Cleaning

Proper care and cleaning should be taken to ensure the life of Recacril® outdoor fabrics.

For regular care and maintenance, the excess dirt should be brushed from the fabric using a soft brush; the fabric should then be sprayed with warm water (not exceeding 100° F) and air-dried.

Periodically, the fabric should undergo a more thorough cleaning. Again, brush fabric with a soft bristled brush, spray with warm water, then apply a gentle soap. Let stand for 10 to 20 minutes taking care not to let it dry, then rinse thoroughly and air-dry. Do not use detergents and/or solvents.

When possible, please make sure to leave retractable awnings deployed or extended until the fabric cover is dried completely. This will help prevent mildew from forming.

Infinity Process

The Recacril® and Recsystem canvases are treated with a special technological process to ensure the lasting quality of the fabric. In this process, nanoparticles completely cover the surface of the fibers in the fabric, forming a permanent coat. After treatment, both the surface and the inside of the fabric are permanently protected against dirt build-up, and adverse effects of a wide variety of atmospheric agents.

The low reactivity and high stability of the Infinity treatment endows long-term protection to the awning, especially against mildew, and provides excellent water and oil repellence.

We're woven differently

RECASENS USA
BCN  1886

DISTRIBUTED BY

CENTRAL OFFICE:
650 Sentry Parkway, Suite 1 - Blue Bell, PA 19422
Phone: 610-667-1691
Fax: 610-667-1605
customerservices@recasensusa.com
www.recasensusa.com

